

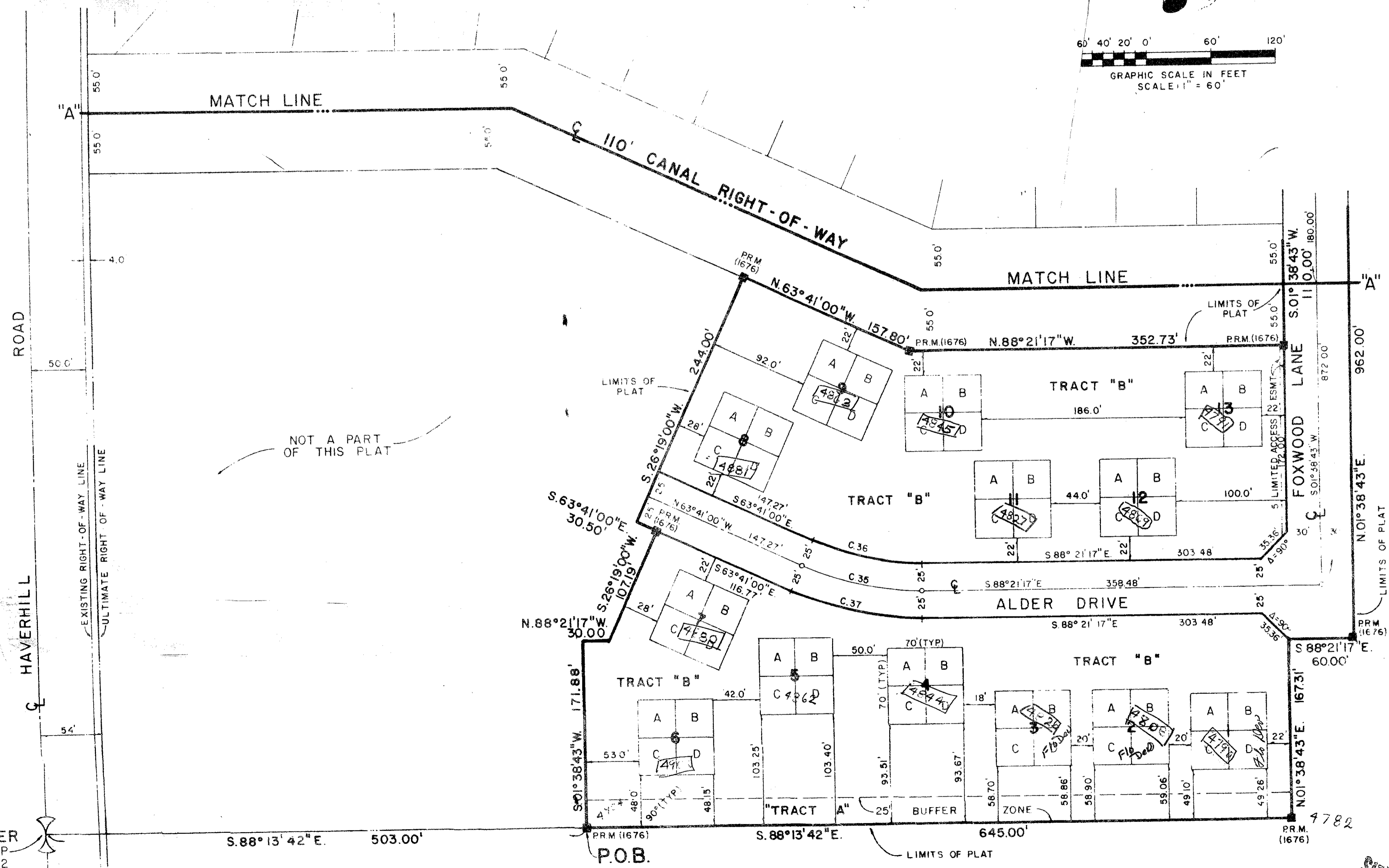
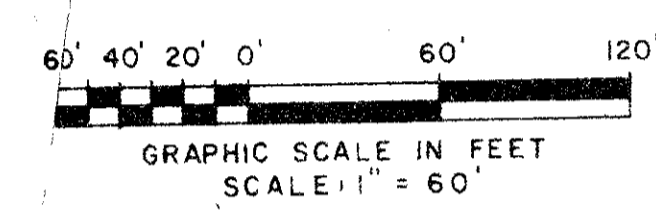
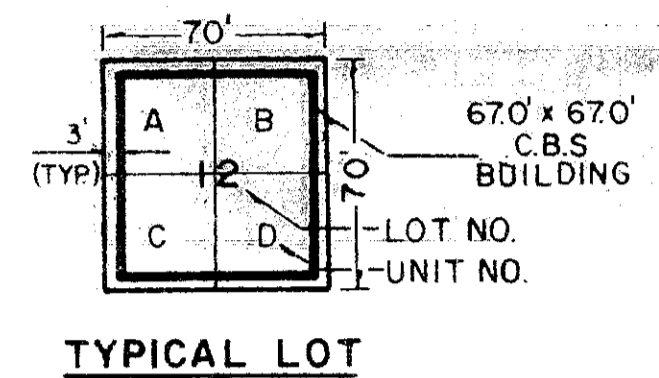
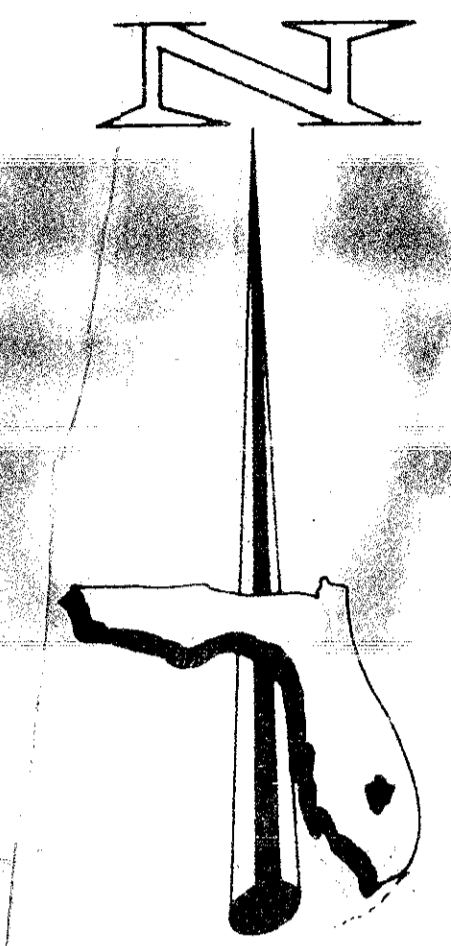
FOXWOOD ESTATES PLAT No. 1

OF LAKESIDE GREEN (P.U.D.)
 LYING IN SECTION 13, TOWNSHIP 43 SOUTH, RANGE 42 EAST,
 COUNTY OF PALM BEACH, STATE OF FLORIDA

FEBRUARY, 1978

80

FOXWOOD ESTATES PLAT NO. 1
 SHEET 2 OF 3



CURVE DATA			
CURVE NO.	DELTA	RADIUS	ARC
1	24°40'17"	300.00	129.18
2	24°40'17"	300.00	129.18
3	90°00'00"	75.00	117.81
4	90°00'00"	75.00	117.81
5	20°15'50"	260.00	91.95
6	4°24'27"	260.00	20.00
7	7°53'26"	340.00	46.82
8	12°23'34"	340.00	74.53
9	4°13'17"	340.00	25.05
10	21°08'34"	275.00	101.48
11	2°21'43"	275.00	16.94
12	24°40'17"	300.00	129.18
13	11°55'36"	325.00	67.65
14	12°44'41"	325.00	72.29
15	19°46'25"	275.00	94.91
16	2°02'12"	325.00	11.55
17	11°37'05"	325.00	65.90
18	11°01'00"	325.00	62.59
19	16°39'37"	300.00	58.00
20	3°22'58"	300.00	5.19
21	12°44'10"	300.00	66.69
22	14°30'40"	300.00	75.98
23	7°53'19"	300.00	41.30
24	10°17'00"	300.00	53.84
25	12°38'10"	300.00	66.16
26	2°41'06"	325.00	12.91
27	24°40'17"	300.00	129.18
28	19°14'48"	275.00	78.7
29	3°35'44"	275.00	22.2
30	20°04'33"	275.00	106.36
31	24°40'17"	300.00	129.18
32	12°20'0"	325.00	69.9
33	12°20'0"	325.00	69.9
34	24°40'17"	300.00	129.18
35	24°40'17"	275.00	117.94
36	24°40'17"	325.00	129.18
37	24°40'17"	325.00	129.18

30

13/43/42

0265-312

34

80

THIS INSTRUMENT WAS PREPARED BY GEORGE HANOS P.L.S. IN THE OFFICES OF FLORIDA SURVEYING AND MAPPING, 941 N. MILITARY TRAIL, WEST PALM BEACH, FLORIDA 33406

SHEET 3 OF 3

FLORIDA SURVEYING & MAPPING, INC.			
REGISTERED LAND SURVEYORS			
WEST PALM BEACH, FLORIDA 33401			
SCALE	1" = 60'	DATE	
DATE	FEB. 1978	BY	
DRAWN	Shone	CHECKED	J.P.
TITLE	FOXWOOD ESTATES PLAT NO. 1		177-162

WEST 1/4 CORNER SECTION 13, TOWNSHIP 43 SOUTH, RANGE 42 EAST

FOXWOOD ESTATES #1